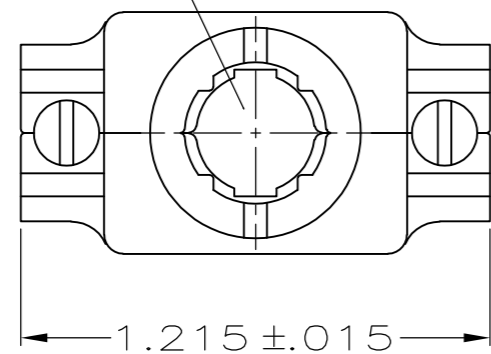


THIS DRAWING IS UNPUBLISHED. RELEASED FOR PUBLICATION  
 © COPYRIGHT - By - ALL RIGHTS RESERVED.

| LOC |    | DIST |     | REVISIONS                 |         |     |      |
|-----|----|------|-----|---------------------------|---------|-----|------|
| GP  | 00 | P    | LTR | DESCRIPTION               | DATE    | DWN | APVD |
|     |    | A1   |     | REVISED PER ECO-11-005033 | 23MAR11 | RK  | HMR  |

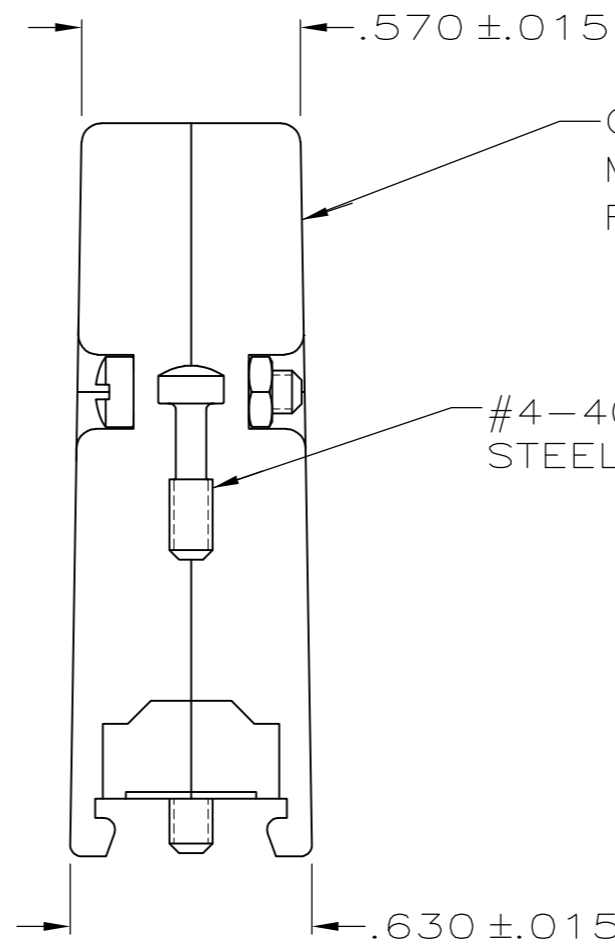
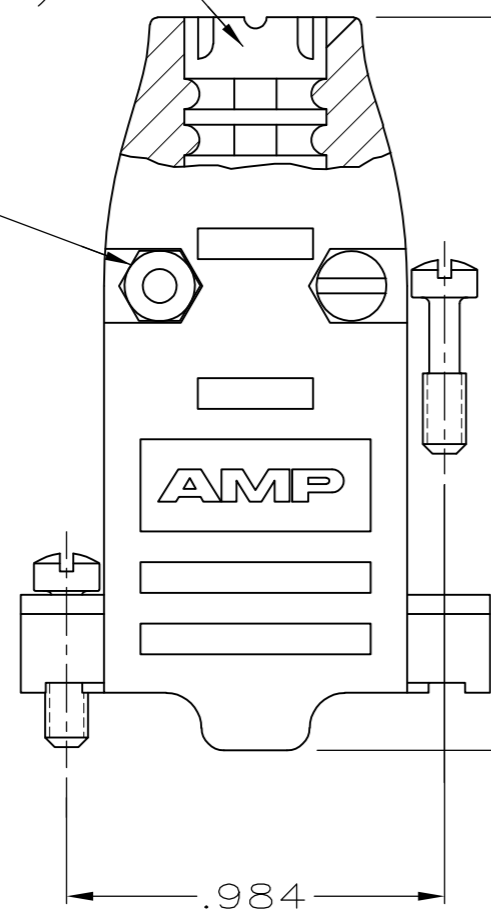
1. ALL PARTS PACKAGED UNASSEMBLED.
- ② AS SHOWN, THIS KIT CONSISTS OF 2 STRAIN RELIEF HALVES, 2 #4-40 SCREWS, 2 #4-40 NUTS & 2 #4-40 MOUNTING SCREWS.
- ③ SAME AS SHOWN, EXCEPT: EACH PART IS INDIVIDUALLY BULK PACKED FOR MULTIPLE KIT ORDERS.
- ④ ZINC PLATED .000200-.000400 THICK, CLEAR CHROMATE COATING.
- ⑤ OBSOLETE.

OPENING FOR CABLE  
(SEE DASH NO FOR DIA)



SIZE IDENTIFICATION  
LETTER MOLDED HERE  
(SEE TABLE)

#4-40 FILLISTER HEAD  
STEEL SCREW & HEX NUT,  
2 EACH REQD. ④



CABLE CLAMP  
MATERIAL: FLAME RETARDANT THERMOPLASTIC  
FINISH: BRIGHT NICKEL OVER BRIGHT COPPER

#4-40 FILLISTER HEAD SCREW  
STEEL, 2 REQD. ④

|                   |           |                      |                     |
|-------------------|-----------|----------------------|---------------------|
| A                 | .200      | -                    | 5745854-5           |
| C                 | .250      | -                    | 5745854-3           |
| H                 | .370      | 5745854-2 ⑤          | 5745854-1           |
| SIZE IDENT LETTER | CABLE DIA | BULK PACKED KIT NO ③ | INDIVIDUAL KIT NO ② |

|   |   |                                |   |                    |       |   |   |       |   |   |       |   |      |       |   |   |        |   |   |                   |            |                        |
|---|---|--------------------------------|---|--------------------|-------|---|---|-------|---|---|-------|---|------|-------|---|---|--------|---|---|-------------------|------------|------------------------|
| THIS DRAWING IS A CONTROLLED DOCUMENT.  |   | DWN<br>B. MCMASTER<br>04AUG05  |   |                    |       |   |   |       |   |   |       |   |      |       |   |   |        |   |   |                   |            |                        |
| DIMENSIONS: INCHES  |   | CHK<br>C. ROHDE<br>04AUG05     |   |                    |       |   |   |       |   |   |       |   |      |       |   |   |        |   |   |                   |            |                        |
| TOLERANCES UNLESS OTHERWISE SPECIFIED:  |   | APVD<br>M. WALMSLEY<br>04AUG05 | NAME<br>CABLE CLAMP KIT, SIZE 1, 9 POSN,<br>180 DEGREES, PLATED PLASTIC,<br>AMPLIMITE |                    |       |   |   |       |   |   |       |   |      |       |   |   |        |   |   |                   |            |                        |
| <table border="1"> <tr><td>0 PLC</td><td>±</td><td>-</td></tr> <tr><td>1 PLC</td><td>±</td><td>-</td></tr> <tr><td>2 PLC</td><td>±</td><td>-</td></tr> <tr><td>3 PLC</td><td>±</td><td>.005</td></tr> <tr><td>4 PLC</td><td>±</td><td>-</td></tr> <tr><td>ANGLES</td><td>±</td><td>-</td></tr> </table> |   | 0 PLC                          | ±   | -                  | 1 PLC | ± | - | 2 PLC | ± | - | 3 PLC | ± | .005 | 4 PLC | ± | - | ANGLES | ± | - | PRODUCT SPEC<br>- | SIZE<br>A2 | CAGE CODE<br>C=5745854 |
| 0 PLC   | ± | -                              |   |                    |       |   |   |       |   |   |       |   |      |       |   |   |        |   |   |                   |            |                        |
| 1 PLC   | ± | -                              |   |                    |       |   |   |       |   |   |       |   |      |       |   |   |        |   |   |                   |            |                        |
| 2 PLC   | ± | -                              |   |                    |       |   |   |       |   |   |       |   |      |       |   |   |        |   |   |                   |            |                        |
| 3 PLC   | ± | .005                           |   |                    |       |   |   |       |   |   |       |   |      |       |   |   |        |   |   |                   |            |                        |
| 4 PLC   | ± | -                              |   |                    |       |   |   |       |   |   |       |   |      |       |   |   |        |   |   |                   |            |                        |
| ANGLES  | ± | -                              |   |                    |       |   |   |       |   |   |       |   |      |       |   |   |        |   |   |                   |            |                        |
| MATERIAL<br>SEE CALLOUT   |   | FINISH<br>SEE CALLOUT          | WEIGHT<br>-   | RESTRICTED TO<br>- |       |   |   |       |   |   |       |   |      |       |   |   |        |   |   |                   |            |                        |
| CUSTOMER DRAWING  |   |                                | SCALE<br>2:1  | SHEET<br>1 of 1    |       |   |   |       |   |   |       |   |      |       |   |   |        |   |   |                   |            |                        |
|   |   |                                | REV<br>A1   |                    |       |   |   |       |   |   |       |   |      |       |   |   |        |   |   |                   |            |                        |